

Studio Art Quilt Associates
Seasonal Palette

Creation of
Reflections,
Venice, Fondamenta Venier
var. 18

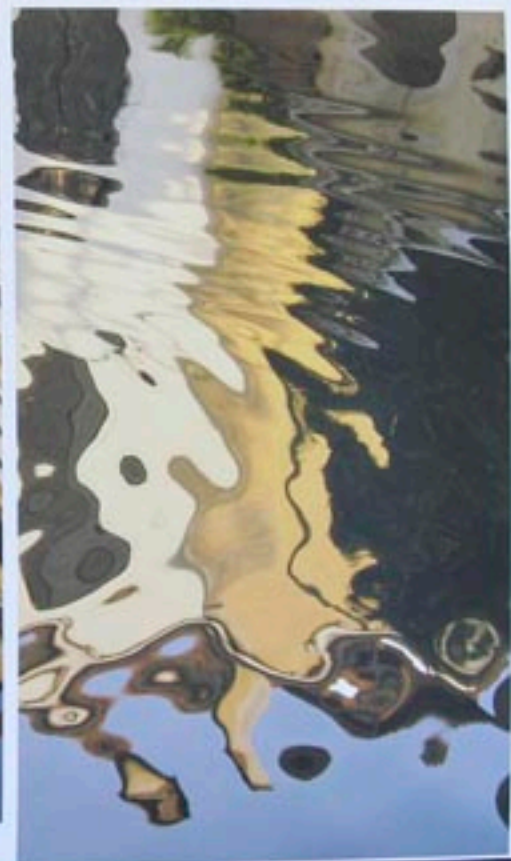
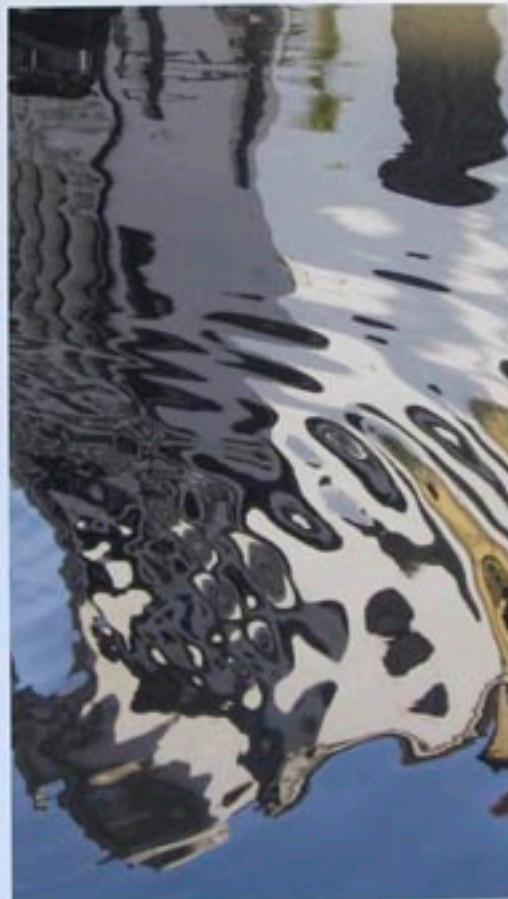
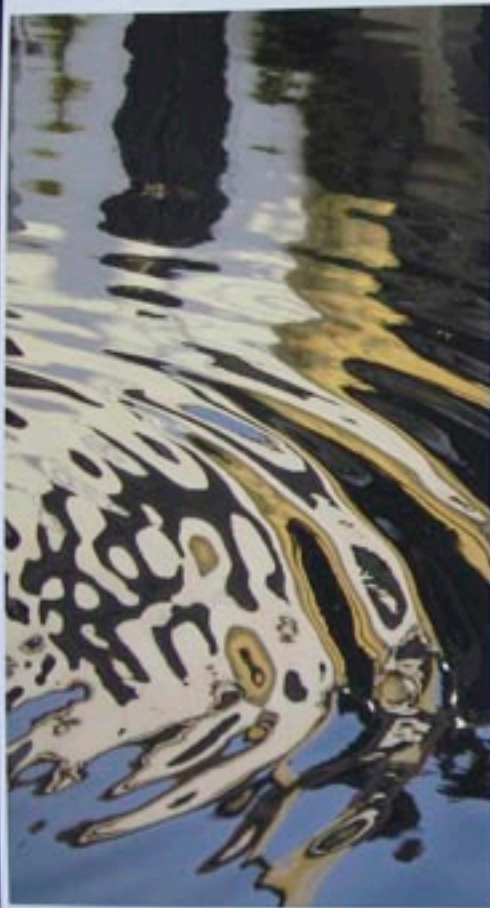
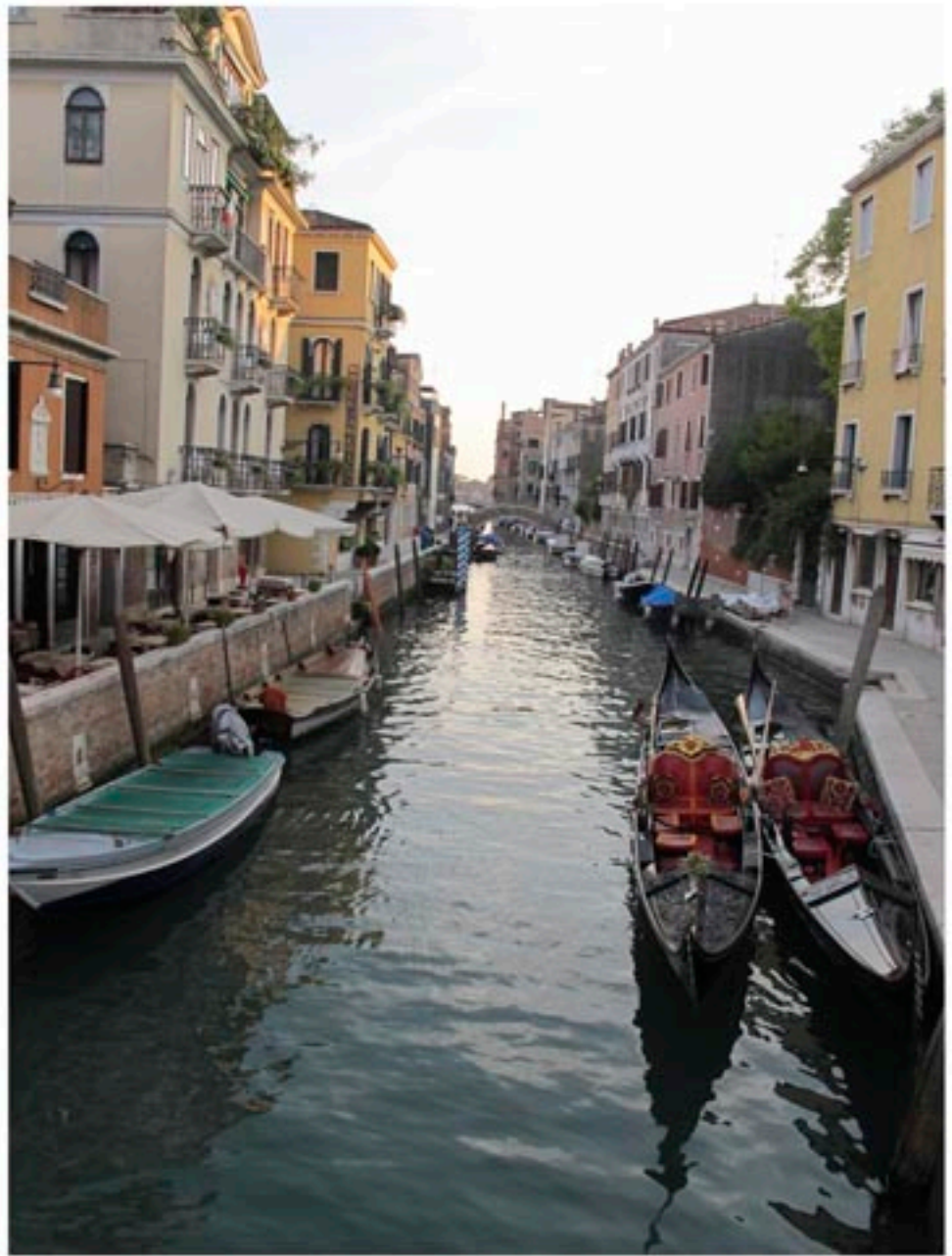
Barbara Schneider
2012





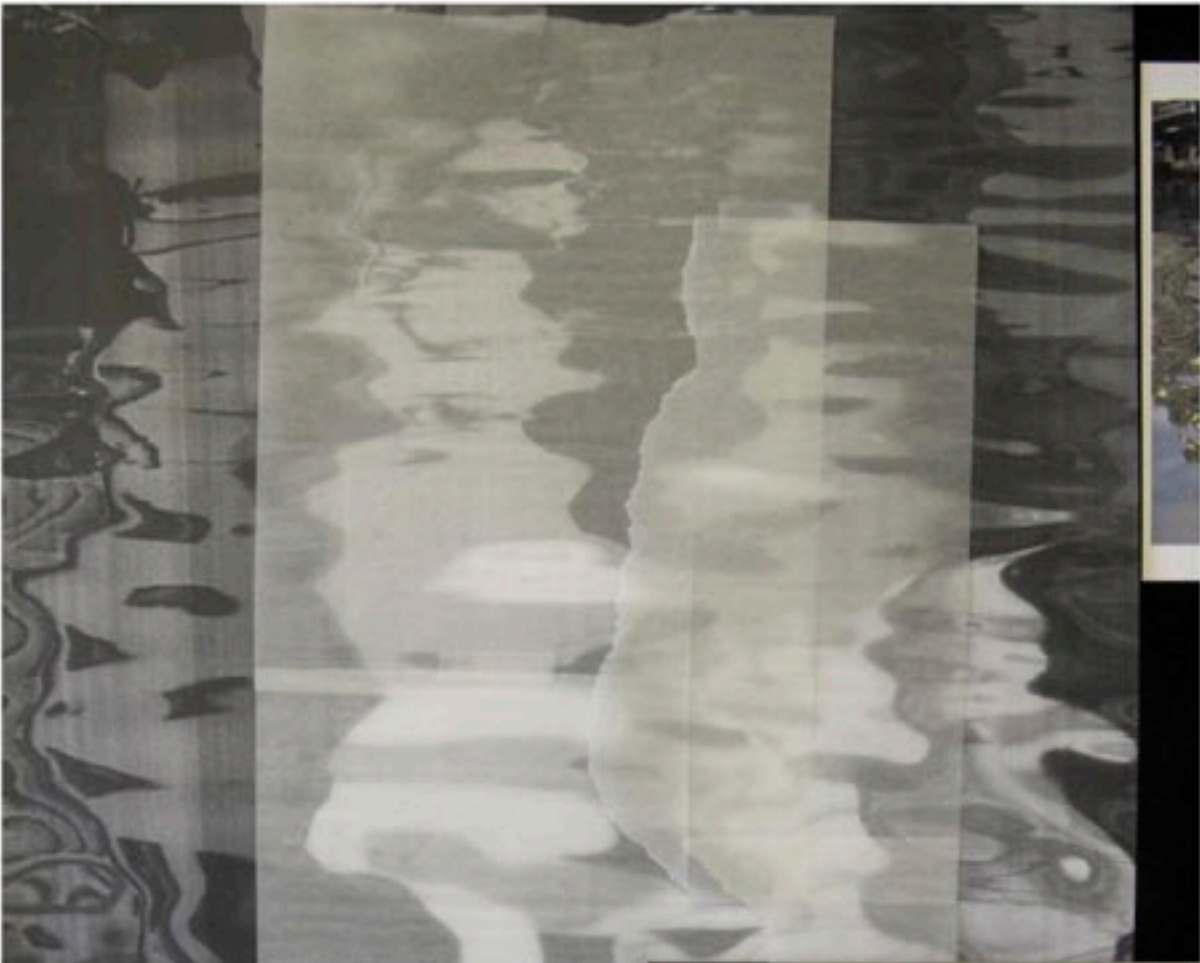
Site of the reflection photos taken in Venice at the Fondamenta Venier near the Academia.

Some of the photos taken at the site are below. These became the basis for the start of this piece.



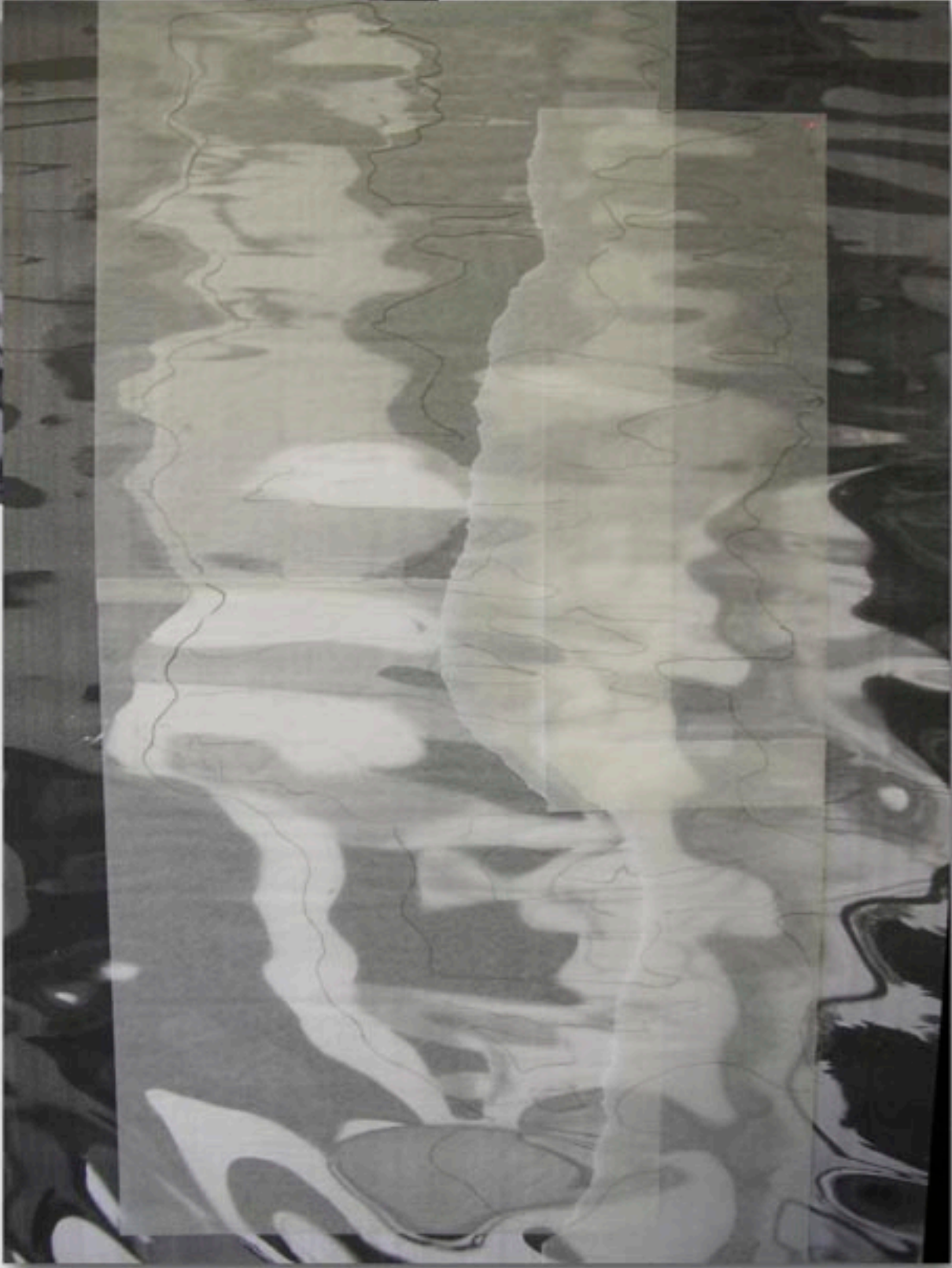
Enlarged black and white photocopy and color printouts of original photos





Creating tracings from sections of the full scale photocopy.

The tracings are then laid over fabric.



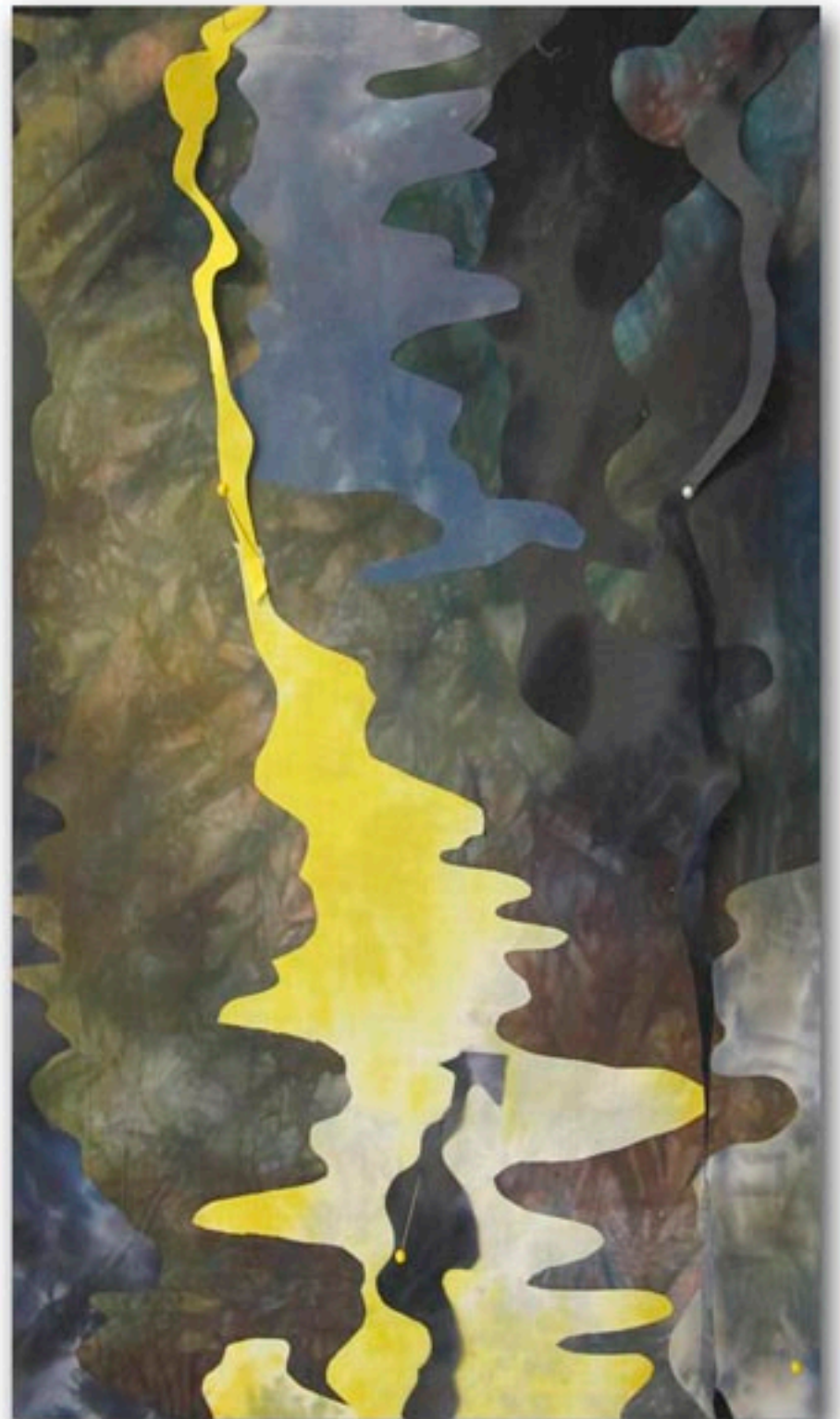
Tracings and cut pieces.

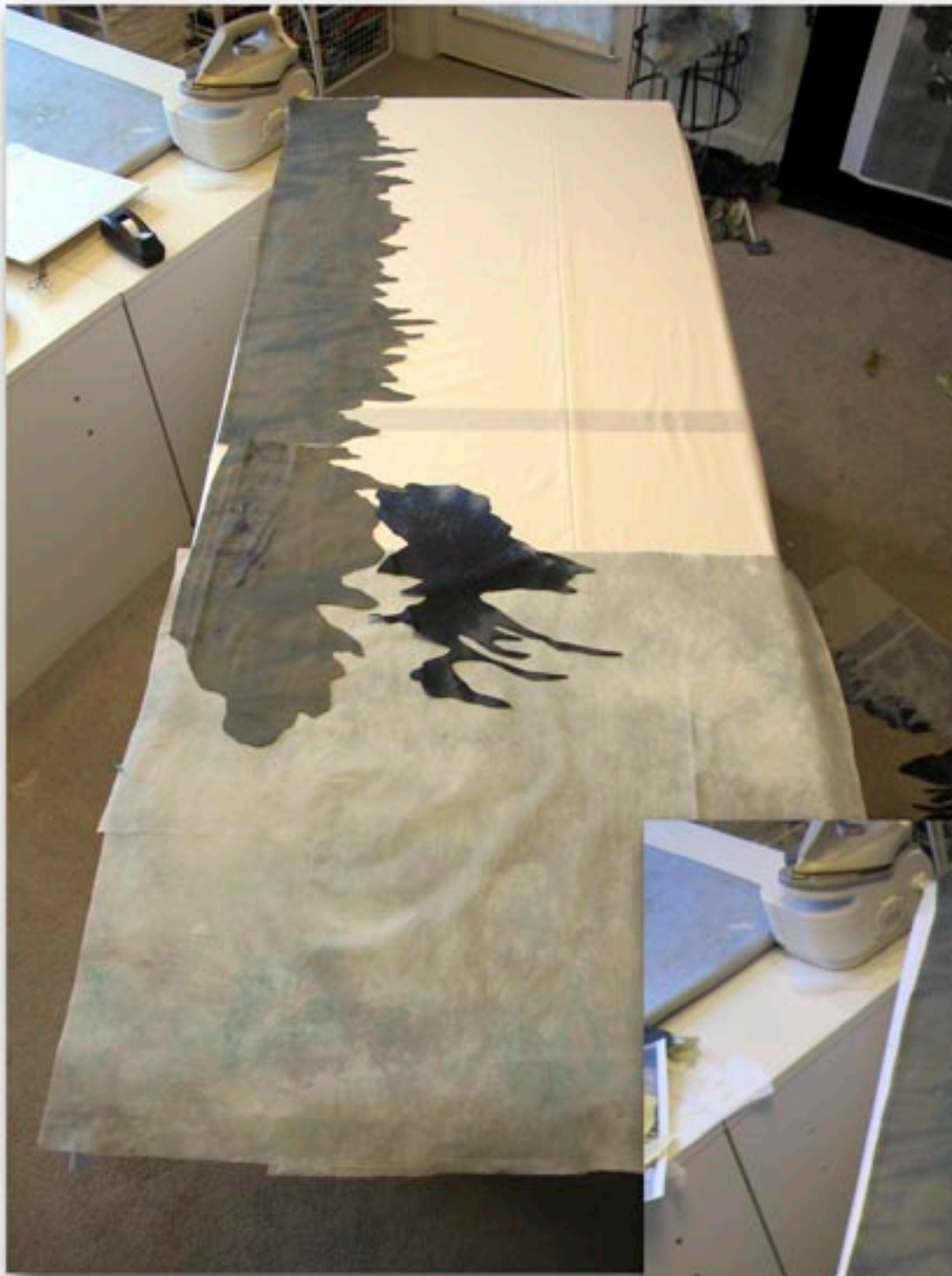


Detail of area with agitated water



Detail of yellow line and water background





Work in progress, blocking in major areas of color.



Work in progress, more sections and layers added.





Work in progress, more details being added.



Photocopy and the piece side x side, in progress.



Details of Seasonal Palette, *Reflections, Venice, Fondamenta Venier, var. 18*



Stitching details



Finished work

Seasonal Palette
Reflections,
Venice, Fondamenta Venier
var. 18

2012

